



3D PRINTER MANUFACTURER

Provide you with a full range of 3D printing solutions and professional services



SHANGHAI ACME TECHNOLOGY CO., LTD.

SHANGHAI ACME TECHNOLOGY CO.,LTD

✉ Mail: info@hrg3d.com

🌐 Website: www.3dacme.com



SHANGHAI R&D CENTER

Building 29, No. 1818, Chengbei Road, Jiading District, Shanghai, China 201800



HUNAN PRODUCTION BASE

Third Floor, 2A, Wanqi International, Yungang Road, Yunxi District, Yueyang City, Hunan Province



SHENZHEN OFFICE

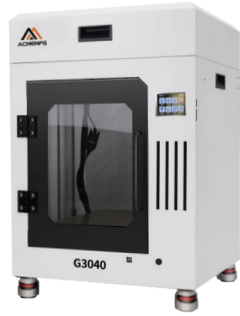
GF Floor, Tower B, Zhengzhong Times Building, No. 99-2 Longcheng Avenue, Longgang District, Shenzhen



SICHUAN PRODUCTION BASE

Zhongke Harchuang Industrial Park, Tongchuan District, Dazhou City, Sichuan Province

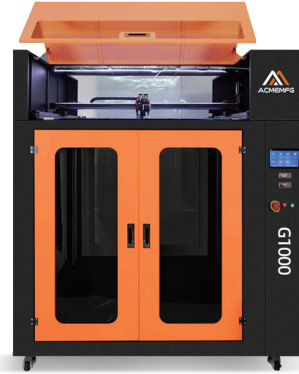
► FDM 3D PRINTER



G3040



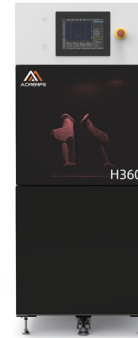
G500



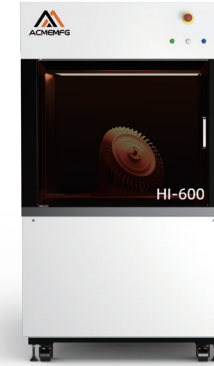
G1000

Model	G3040	G500	G1000
Features	All-round model, color touch screen, power-off resume, material break detection, dual-axis transmission, closed system, new UI display	500 machine upgraded version, color screen touch control, power-off resume printing, material breakage detection, CNC enhancement Closed system, extra large size, 220V silicone hot bed, new UI display	1050x1050x1050mm large printing size, color screen touch control, power-off resume printing, material break detection, WiFi control, automatic leveling. Built-in camera monitoring, ball screw, linear module + closed-loop high torque motor + intelligent drive, closed system, extra large size, 220V silicone hot bed, new UI display
Number of nozzles	one	one	one
Molding size	300*300*400mm	500*500*500mm	1050*1050*1050mm
Color (more than 10 units can be customized)	Black+Red	Black+White	Black+White
Layer thickness	0.05-0.4mm	0.05-0.4mm	0.05-0.4mm
Printing method	USB connection, U disk, SD card	USB connection, U disk, SD card, WIFI	USB connection, U disk, SD card, WIFI
LCD screen	3.5-inch TFT touch color screen	3.5-inch TFT touch color screen	7.0-inch TFT touch color screen
Nozzle diameter (default)	0.4mm	0.4mm (optional 0.6, 0.8mm, 1.0mm)	0.4mm (optional 0.6, 0.8mm, 1.0mm)
Supporting materials	PLA, ABS, wood, TPU (soft material)PETG, HIPS, carbon fiber		
Language interface	Chinese/English/Korean/Russian/Korean/Spanish		
Supported file formats	.STL, G-Code,Obj		
Machine size	470mm*560mm*720mm	690mm*710mm*910mm	1670mm*1420mm*1820mm
Package Size	580mm*640mm*750mm	820mm*820mm*1100mm	1770mm*1570mm*1990mm
Machine weight	34kg	90kg	450kg
Package weight	50kg	130kg	572kg

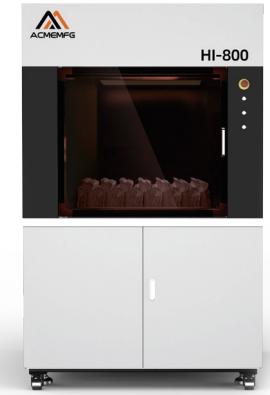
► SLA 3D PRINTER



H360



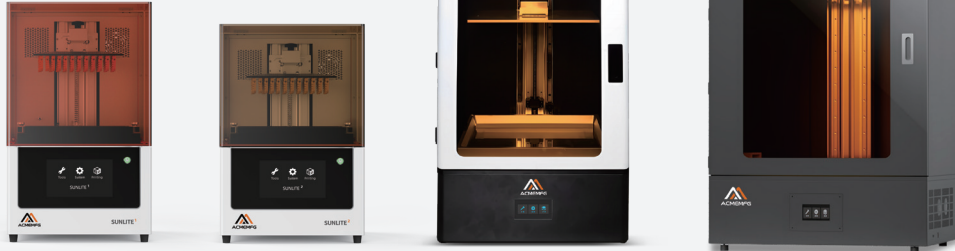
HI-600



HI-800

Specification	Model	H360	HI-600	HI-800
	Physical dimension	700*860*1720mm	1040*1270*1850mm	1385*1515*2195mm
	Equipment weight	330KG	850KG	1460KG
Equipment power	350W	350W	350W	
Laser system	Number of lasers	1		
	Laser type	Diode-pumped solid-state laser Nd:YVO ₄		
	Laser wavelength	355nm		
Optical scanning system	Laser power	3W		
	Spot diameter	0.06-0.8mm	0.06-0.8mm	0.1-0.8mm
	Scan form	High-speed galvanometer scanning system		
	Part scanning speed	Recommend 6m/s		
	Part Jumping Speed	Recommend 10m/s		
Reference production Speed	100~300g/h	300~400g/h	300~400g/h	
	300~400g/h			
Spreading system	Coating method	Precise positioning - vacuum adsorption		
	Normal layer thickness	0.1mm		
	Rapid part layer thickness	0.15mm		
	Precise product layer thickness	0.05mm		
	Feature making layer thickness	0.05mm-0.15mm selection		
Resin tank	Resin Tank Volume	80kg	240kg	500kg
	Maximum molding size	360*360*300mm	600*600*400mm	800*800*500mm
Lifting system	Basic Platform	Casting Benchmark Platform	Casting Benchmark Platform	Marble reference platform
	Repeatability	±0.01mm		
	Maximum production part weight	10kg	30kg	100kg

▶ LCD 3D PRINTER



SUNLITE¹ SUNLITE²

S5

S7

Model	SUNLITE 1	SUNLITE 2	S5	S7
Forming method	LCD	LCD	LCD	LCD
Print size	218*123*220mm	218*123*160mm	298.08*165.60*400mm	527*296*550mm
Machine size	355*302.2*584.5mm	355*302.2*527mm	454*387*795mm	780*571*1094mm
Package Size	425*380*715mm	425*380*590mm	600*510*910mm	820*610*1140mm
Product Weight	19kg	18.5kg	45kg	115kg
Product gross weight	21kg	20kg	50kg	160kg
Power input	AC110~240V	AC110~240V	AC100~240V 50~60Hz	
Total power	120W	120W	250W	
Print layer thickness	0.025~0.1mm		0.025mm/0.05mm/0.075mm/0.1mm	
Printing speed	60mm/h		20mm/H(Z axis Max)	
Slicing software	Vlare、Voxeldance Tango		ChiTu	CHITUBOX
File format	STL/OBJ		.STL/.SCL	.STL
Operating system	Windows 7/10、MAC OS		Windows 7 and above	
Curing wavelength	405nm		405nm	
Resolution	7680*4320 pixels		6480x3600pixels	3840X2160pixels
Applicable consumables	405nm wavelength resin		Casting resin/non-casting resin	
Operating temperature	10°C~30°C		10°C~30°C	
Relative humidity	30%~80%		30%~90%	

*All equipment diagrams shown in the figure are not real-scale size comparisons. They are only to meet the adaptability of graphic and text layout. Please refer to the equipment size in the parameters.

▶ DLP 3D PRINTER



MOONLITE 100

Product name	Sinking DLP 3D printer
Model	M100
Technology type	Texas Instruments DLP Technology
Light source	405nm uv light source
Resolution	1920x1080p
Molding size	(length, width and height)96x54x100mm
Layer thickness	0.01-0.05mm
Accuracy	±25um
Equipment weight	30kg
Slicing software	Prism Master



MOONLITE 300

Model	M300
Molding technology	Texas Instruments DLP light curing technology
Light source	405nm (385nm optional)
Maximum energy density	Low power version 45mw/cm ² High power version 90mw/cm ²
Optical resolution	3840x6120p
Molding size	210x110x300mm
Pixel accuracy	30μm, 5-15 micron can be customized
Z-axis repeated positioning	2μm
Layer thickness	10-100 μm
Scraper adjustment accuracy	10μm
Feeding method	Pneumatic assisted peristaltic pump feeding system
Minimum printable quantity	10ml
Printable solid content	30%wt -90%wt
Equipment Specifications	Net weight 50kg, width 60cm, height 90cm, depth 40cm
Power	220v, 100 watts



▶ 3D SCANNER



White light 3D scanner
ARCHER-W



Desktop dental 3D scanner
DESKSCAN-DE

Range	250mm
Point pitch	0.25mm
Accuracy	0.1mm
Applicable range	400~1500mm
Sensor	ONSEMI 1310000pixel 600fps
Grating	Ti 1280*800 Led white light
Lens	12mm standard optical measurement lens
Communication interface	USB 3.0
Power supply	19V 4.7A/100~240V 60HZ/1.5A
Scanning speed	0.03s non-contact structured light scanning
Scanning mode	Non-contact structured light scanning
Weight	0.9kg
Size	240*165*55mm

Device model	Deskscan-DE
Sensor	1310000pixels
Multi-angle re-scan	Support
Lens	16mm/5MP
Instrument bracket	5mm optical calibration plate
Grating	Ti 1280LED
Scanning accuracy	0.01mm
Turntable	Intelligent linkage dual-axis turntable
Smallest details	0.1mm
Scan range	100mm
Calibration board	0.01mm
Scan speed	0.3S
Communication interface	USB 2.0
Power supply	12V 5A
Data Format	Lossless STL 3D format



Industrial handheld 3D scanner
RAYSCAN 771



Oral 3D scanner
O2

Device model	Rayscan 771
Measurement speed	480,000 times/second
Scanning area(mm ²)	320X250
Laser light source	Red/Blue (14 cross laser beams + 1 extra beam)
Laser category minimum resolution	CLASS II
wireless computing unit	0.05
Accuracy	Support
Volumetric accuracy	Maximum 0.02mm
Volumetric accuracy	0.02mm+0.03mm/m
(combined with CoordMeasis)	0.02mm+0.015mm/m

The scope of work	14×14×15 mm
Camera resolution	1.3MP CMOS
Pixel size	4.8μm
Oral scanning light source	LED (no laser radiation)
Export open data formats	OBJ/STL/PLY
Light radiation intensity	≤100mW/cm ²
Oral digital impression instrument size (excluding scanning head)	200×58×36mm
Scan head size	79X19.7X15.8mm
Handle weight	~240g
Oral digital impression instrument data cable (control box is connected to the oral digital impression instrument host)	1.9m
USB cable (to connect the control box to the computer)	0.7m
Voltage	220V~50Hz

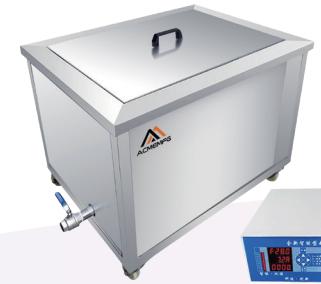
▶ ACCESSORIES - CLEANING MACHINE



UW-360



UW-600



UW-800

Model	UW-360	UW-600	UW-800
Product name	Ultrasonic cleaning machine		
Inner tank material(SUS)	304 stainless steel,Thickness 2.5mm		
Capacity(L)	36	120	140
Inner tank size	360*360*300mm	600*600*400mm	800*800*500mm
Dimensions	650*500*520mm	850*700*620mm	950*700*620mm
Shaker (PCS)	15	36	40
Ultrasonic power	900W	2160W	2400W
Frequency (KHZ)	28	28	28
Rated power	1125W	2700W	3000W
Power supply	AC220V 50HZ	AC220V 50HZ	AC380V 50HZ
Time control	1-166 minutes	1-166 minutes	1-166 minutes
Usage environment	20°C~30°C	20°C~30°C	20°C~30°C
Cleaning basket	Included	Included	Included
Sound-reducing cover	Included	Included	Included
Cleaning medium	Water, Alcohol	Water, Alcohol	Water, Alcohol

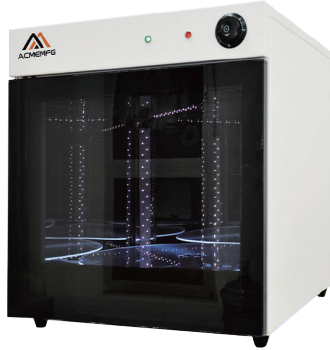
LCD/DLP Printer supporting cleaning machine



UW-300

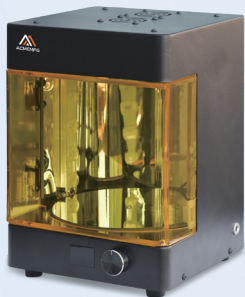
Product name	Ultrasonic cleaning machine
Model	UW-300
Inner tank size	300X155X150mm
Dimensions	325X180X280mm
Capacity	6L
Ultrasonic power	180W
Ultrasonic frequency(KHZ)	28/40
Time(Min)	0-99
Package Size	410X255X335mm

ACCESSORIES - CURING MACHINE



Model	UV-360	UV-600	UV-800
Product name	UV curing box		
Material	SPCC, thickness 1.0mm, mirror film		
Curing Dimensions	360*360*300mm	600*600*400mm	800*800*500mm
Inner Cavity Length, Width, and Height	528*530*350mm	868*870*470mm	1145*1150*595mm
Outer Diameter Length, Width, and Height	530*625*570mm	870*970*690mm	1150*1250*810mm
Light Source Wavelength	355-405nm	355-405nm	355-405nm
Turntable Speed	5rpm	5rpm	5rpm
Power	120W	160W	160W
Power Specifications	AC220V 50Hz	AC220V 50Hz	AC220V 50Hz
Time Control	0-30min	0-30min	0-30min
Using Temperature	15-35°C	15-35°C	15-35°C
Using Humidity	<40%	<40%	<40%

LCD/DLP Printer supporting curing machine



UV-160

Product name	Curing machine
Model	UV-160
Type of light source	UV LED
Light source wavelength	405nm
Control method	Dedicated processor
Heating power	70W
Optical power	20W on the top, 10W on each side
Heat dissipation method	Air cooling
Input voltage	110-220V
Curing volume	150*150*160mm
Dimensions	185*185*252mm
Control time	0-120 minutes

POST-PROCESSING WORKSTATION



Product name	Post-processing workstation
Product number	PW-12
Exhaust air speed	0.25~0.45m/s range adjustable
Inlet water pressure	>0.5Pa
Power configuration	AC220V/50Hz
Maximum power	600W
Weight	<200Kg
Working area size	1000x700x680mm
Overall dimensions	1150x680x1950mm
Accessories	Optional sink and faucet

The main functions of the post-processing workstation:

- Clean the smell in the working environment.
- Collect waste liquid during the cleaning process.
- Crush and process the solid waste of light-cured products.

This equipment is to protect the safety of users and prevent various harmful gases, odors, and flammable, explosive, and corrosive substances generated during product cleaning and curing operations in 3D printing from spreading in the working environment.

Features:

- Ventilation holes are provided on the upper part of the post-processing workstation, and a single-slit exhaust structure is adopted to effectively discharge harmful gases.
- Using 304 stainless steel work surface, easy to clean.
- Transparent tempered glass window design, better lighting effect and wider field of vision.
- The operating door slides up and down the tempered glass window and can be positioned arbitrarily.

▶ 405nm RESIN CONSUMABLES



Product name	Jewelry resin	Red wax resin	Rigid resin	ABS-like plant-based resin	Engineering resin	High toughness resin
Model	JR-JC	RE-CR1	RE-RI	RE-PB	RE-EN	RE-HT
Maximum force (KGF)	88.6+10%	160.8+10%	168.7+10%	116.5+10%	162.76+10%	89.9+10%
Tensile strength (MPa)	20.88+10%	37.90+10%	45.62+10%	27.46+10%	38.36+10%	21.19+10%
Deformation of maximum force point (MM)	18.73+10%	6.87+10%	5.75+10%	12.33+10%	6.80+10%	8.55+10%
Yield point elongation (%)	47.34+10%	6.21+10%	6.34+10%	5.57+10%	7.22+10%	5.10+10%
Elongation at break (%)	32.96+10%	12.15+10%	11.5+10%	21.8+10%	35.44+10%	40.10+10%
Maximum Flexural Strength (MPa)	13.75+10%	41.40+10%	58.3+10%	20.27+10%	44.15+10%	18.82+10%
Flexural Modulus of Elasticity (MPa)	333.68+10%	1188.91+10%	1123.2+10%	531.27+10%	979.24+10%	528.4+10%
Hardness (Shore D)	58~68 D	82~86 D	80~85 D	78~86 D	80~88 D	78~82 D
Impact strength, notched Izod, J/M	117.72+10%	46+10%	76+10%	58+10%	454.37+10%	397+10%
Tensile modulus (MPa)	152.82+10%	508.12+10%	608.5+10%	328.5+10%	447.12+10%	283.32+10%

Product name	Dental resin- Repair dental mold	Dental resin- Orthodontic dental mold	Dental resin- Surgical guide	Dental resin- Crown casting resin
Model	DR-RM	DR-OM	DR-SG	DR-CC
Flexural modulus	1162.23Mpa+10%	397.96Mpa+10%	481.96 Mpa +10%	811.088 Mpa +10%
Elongation at break	12.89%+10%	8.44%+10%	17.46%+10%	8.853%+10%
Bending strength	52.48MPa±10%	21.72MPa+10%	22.08 Mpa +10%	39.816 Mpa +10%
Hardness (Shore D)	85-88 D	85 D	85 D +10%	85-88D +10%
Density (g/cm ³)	1.05-1.28 g/cm ³	1.05-1.28 g/cm ³	1.05-1.25 g/cm ³	1.05-1.25 g/cm ³
Notched impact strength	144j/m+10%	74.3 j/m +10%	115.2j/m +10%	133.97j/m+10%
Maximum pulling force	2473N +10%	752N +10%	992.5N+10%	1272N +10%
Viscosity (Mpa · s)	150-300Mpa · s	250-350Mpa · s	100-200 MPa · s	50-170 MPa · s
Tensile strength	52.7 MPa+10%	18.1 MPa+10%	312.8 Mpa +10%	30.599Mpa+10%
Tensile modulus	397.96Mpa+10%	268.45 MPa+10%	23.87 Mpa +10%	433.669 Mpa +10%
Test chamber temperature	23°C±2°C	23°C±2°C	23°C±2°C	23°C±2°C
Humidity in test room	50%RH+5%RH	50%RH+5%RH	50%RH+5%RH	50%RH+5%RH
Test paper test standard	ASTM	ASTM	ASTM	ASTM

Post-curing: The test paper is post-cured for 2 minutes with 200mw/cm² 405nm in water.

▶ 355nm RESIN CONSUMABLES



High-performance photosensitive polymer composite materials can print with exquisite details and realism comparable to superior finished products. They can highly simulate transparent, soft, and hard materials and products, providing more 3D printing solutions for various fields.

Product name	Rigid resin	High toughness resin	Engineering resin	High temperature resistant resin	Transparent resin	Casting resin
Model	W960EF	B968	YL59	WL93	TC50	CAST8801
Color	White	Brown	Pale yellow	White	Transparent	Transparent
Density (g/cm ³ @ 25 °C)	1.11~1.15	1.11~1.15	1.11~1.15	1.12~1.18	1.12	1.13
Curing depth (mm)	0.135~0.158	0.135~0.152	0.135~0.158	0.14~0.16	0.18	0.13
Critical exposure (mJ/cm ²)	7.9~8.8	8.9~9.5	8.3~9.2	7.1~8.1	7.7	10.2
Construction layer thickness (mm)	0.05~0.12	0.05~0.12	0.05~0.11	0.05~0.12	0.1	/
Hardness(D)	78~88	77~88	78~88	78~90	83	84
Flexural modulus (MPa)	2,722-2,795	2,682-2,778	2,722-2,792	2,675-2,765	2870	2360
Bending strength (MPa)	69-75	70-74	69-76	70-76	84	80
Tensile modulus (MPa)	2,598-2,715	2,599-2,715	2,649-2,731	2,621-2,775	2760	2730
Tensile strength (MPa)	40-57	40-58	41-58	44-56	60	49
Elongation at break	7-11%	7-12%	7-11%	7-11%	10%	15%
Notched impact strength (J/m)	29-34	30-36	29-34	27-37	35	22
Heat distortion temperature (°C)	47-60	55-68	58-69	80~93	50	53
Glass transition temperature (°C)	48~65	60~75	62~75	93~107	55	49